



Maitland Road, SE26 | £950,000

02087029777

[sydenham@pedderproperty.com](mailto:sydenham@pedderproperty.com)

**pedder**  
We live local



# In General

- Highly sought after location
- Wonderful views of Alexandra Recreation Grounds
- Through Reception
- Charming kitchen / breakfast room
- Three double bedrooms
- Bathroom and downstairs shower room
- Mature rear garden
- Excellent transport links

# In Detail

A beautiful three double bedroom late Victorian home, positioned on the ever popular Maitland Road enjoying uninterrupted views of Alexandra Recreation Grounds.

The approach is both attractive and inviting, with a charming frontage that reflects the home's period character and kerb appeal. Original features combine effortlessly with a warm, welcoming feel, and being so rich in character, also offers excellent scope for a purchaser to enhance and personalise the property to their own taste.

The ground floor comprises a generous through reception, thoughtfully arranged to provide both open plan flow and the option of separation, ideal for flexible living and entertaining. The kitchen/breakfast room offers ample workspace and storage, along with space for dining, however if you required even more space there is also a generous side return which could be extended into (STP). Upstairs, three well proportioned double bedrooms each possess a distinct character; the rear and middle rooms enjoy tranquil views over the rear garden, while the main bedroom benefits from striking panoramic views across the park.

Although the property is terraced, there is the added advantage of a historic and secure service alley, shared by residents, ideal for garden waste, or bike storage.

There is a real charm to this property, with a natural warmth and character that immediately creates a welcoming, homely feel. Maitland Road is highly sought-after for its views and peacefulness as well as proximity to the children's park, restaurants, schools and excellent transport links.

Homes like this rarely come to market and must be seen to be fully appreciated.

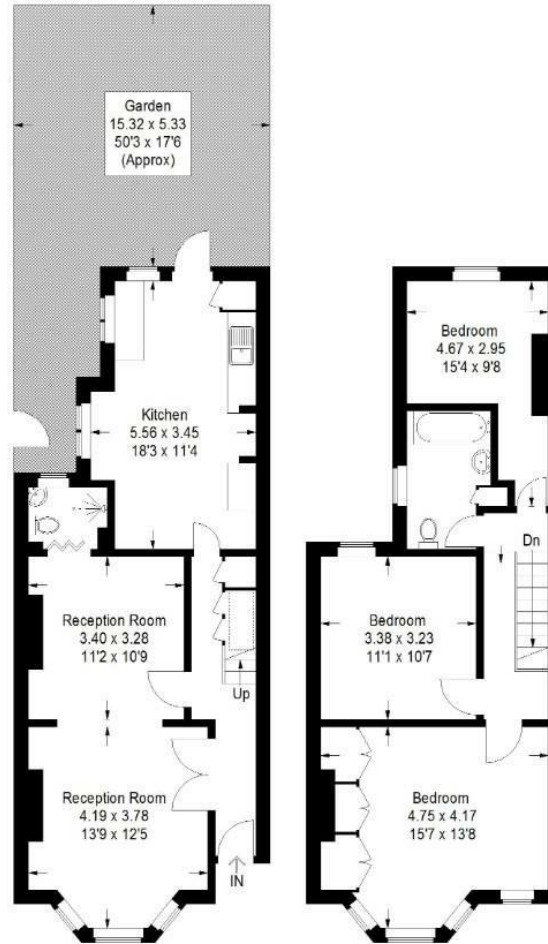
EPC: TBC | Council Tax Band: D



# Floorplan

Maitland Road, SE26

Approximate Gross Internal Area  
106.1 sq m / 1142 sq ft



Ground Floor

First Floor

□ = Reduced headroom below 1.5 m / 5'0

Copyright www.pedderproperty.com © 2026  
These plans are for representation purposes only as defined by RICS - Code of Measuring Practice. Not drawn to Scale. Windows and door openings are approximate. Please check all dimensions, shapes and compass bearings before making any decisions reliant upon them.

Energy Efficiency Rating	Current	Potential
Very energy efficient - lower running costs		
102 plus) <b>A</b>		
81-101) <b>B</b>		
69-80) <b>C</b>		
55-68) <b>D</b>		
39-54) <b>E</b>		
21-38) <b>F</b>		
1-20) <b>G</b>		
Not energy efficient - higher running costs		
England & Wales	EU Directive 2002/91/EC	

Pedder Property Ltd trading as Pedder for themselves and for the vendor/landlord of this property whose agents they are, give notice that (1) these particulars do not constitute any part of an offer or contract, (2) all statements contained within these particulars are made without responsibility on the part of Pedder or the vendor/landlord, (3) whilst made in good faith, none of the statements contained within these particulars are to be relied upon as a statement of representation or fact, (4) any intending purchaser/tenant must satisfy him/herself by inspection or otherwise as to the correctness of each of the statements contained within these particulars, (5) the vendor/landlord does not make or give either Pedder or any person in their employment any authority to make or give representation or warranty whatsoever in relation to this property.